



MACQUARIE 235 - CONTEMPORARY FACADE

Facade shown is for illustration purposes only

Lot 34 Hillsborough Green, Arundel

 5
  3
  2
  2

Land Size	338m ²
Land Price	\$450,000
Registration	September, 2019
House Size	234.72 m ²
House Price	\$416,825

TOTAL FIXED TURNKEY PRICE:

\$866,825

Price valid until: 22/10/19

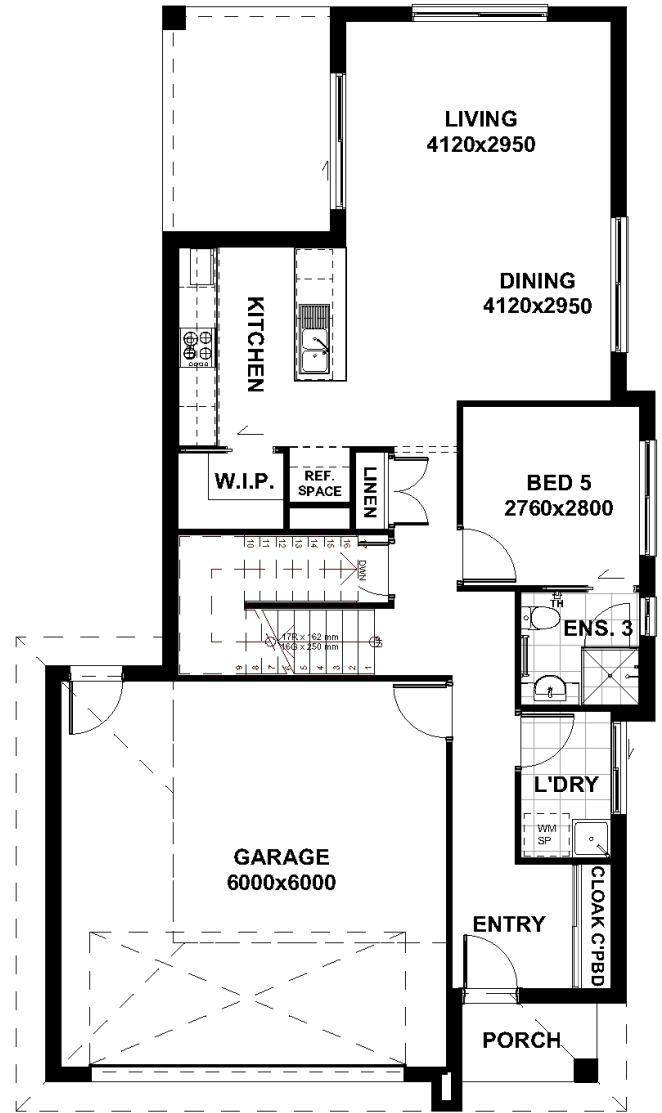
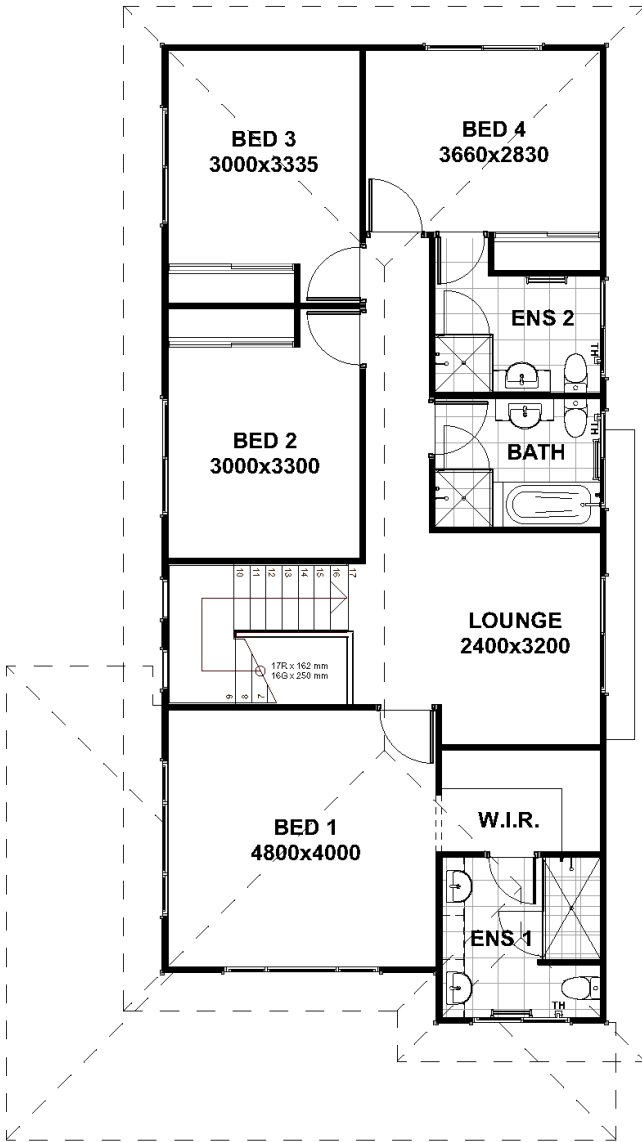
22/08/2019 | Platinum Inclusions

PACKAGE HIGHLIGHTS

- ✓ Full Turnkey, Fixed Price, Platinum Inclusions
- ✓ **Fixed price site costs – no more to pay!**
- ✓ **Combination of render & cladding to whole house**
- ✓ **Exposed aggregate driveway & turfing to entire lot**
- ✓ **Good neighbour fencing & full landscaping package**
- ✓ Superior LED lighting package throughout entire house (excl. garage)
- ✓ Dulux 3 coat premium paint system
- ✓ **Ducted A/C throughout whole house**
- ✓ **40mm stone benchtops to kitchen and bathrooms**
- ✓ **Designer kitchen with 900mm Westinghouse stainless steel kitchen appliances & dishwasher**
- ✓ **2740mm raised ground floor ceiling height & 2590mm first floor ceiling height**
- ✓ Ceiling fans in every bedroom, living area & alfresco
- ✓ Colorbond roof & barrier screens to windows & doors
- ✓ Building approval & water application fee's included
- ✓ 20 Year structural guarantee

Terms, conditions, fees and government charges may apply. The illustrations provided are artist impressions only and may include alternative finishes and features to those supplied by Silkwood Homes such as landscaping and fencing. All images and floor plans remain in the property of Silkwood Homes and are protected by Copyright. Land and prices are subject to availability and can change without notice. Silkwood Homes reserves the right to amend specifications and prices without notice. Silkwood Homes QLD ABN: 65 149 767 966 QBCC: 1218048 | Silkwood Homes NSW ABN 14 156 406 352 Licence 248052C

MACQUARIE 235



House Areas:

Ground Floor Living	82.47 m ²
Upper Living Area	100.88 m ²
Garage	39.34 m ²
Porch	2.93 m ²
Alfresco	9.10 m ²
Grand Total	234.72 m²